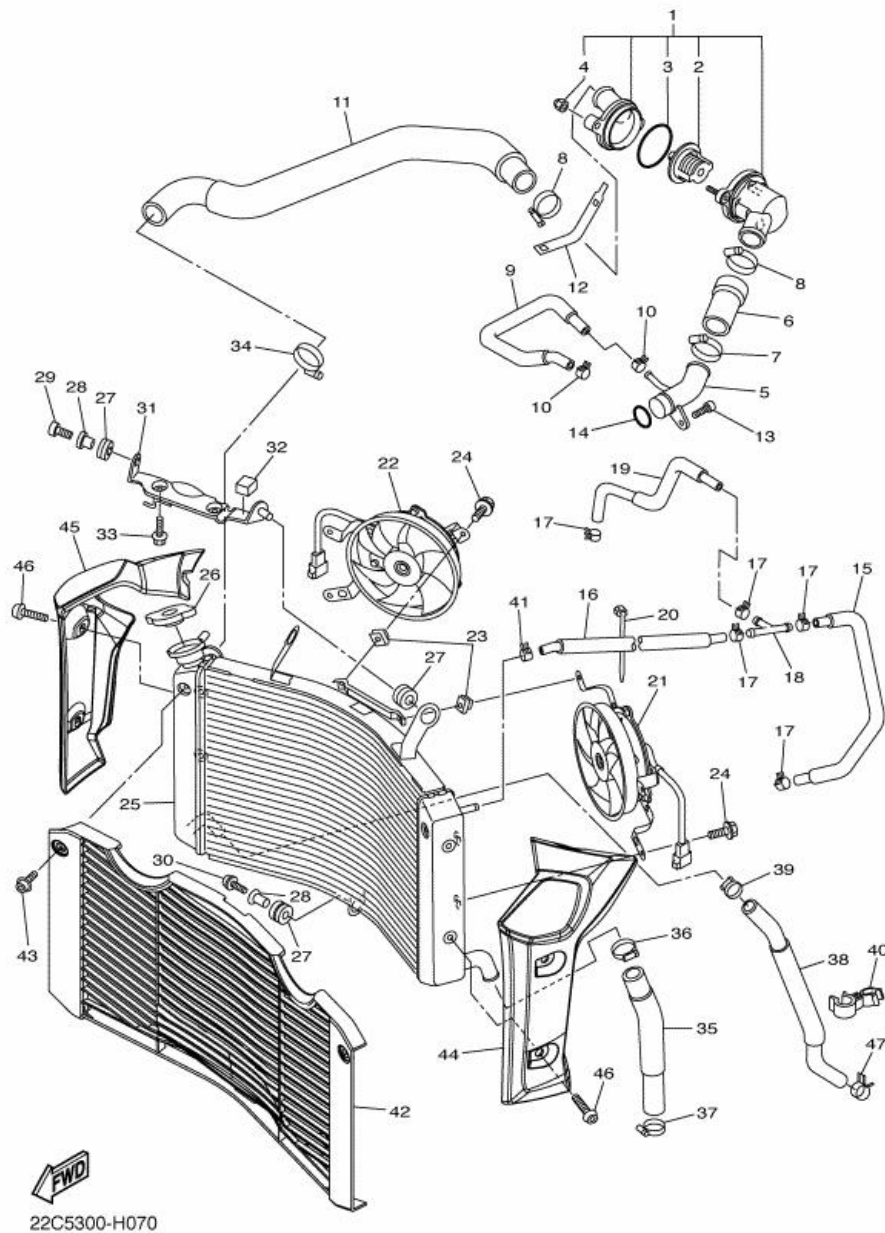
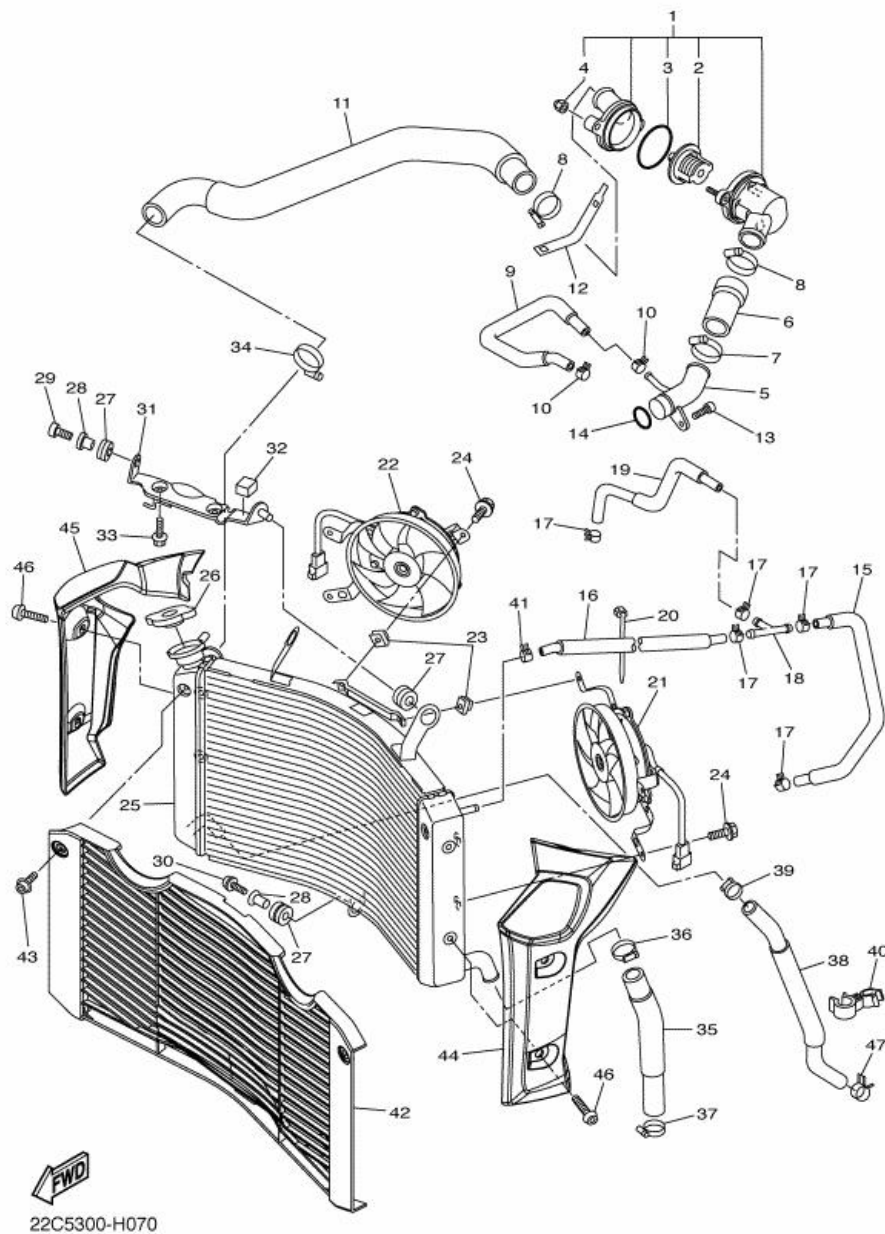


Fig. 07 RADIATEUR & TUYAU



| N° | Référence de la | Description | | Remarques |
|----|-----------------|--------------------------------|---|-----------|
| 1 | 2D1-12410-00 | ENS. THERMOSTAT | 1 | |
| 2 | 5LP-12411-00 | THERMOSTAT | 1 | |
| 3 | 93210-49046 | JOINT TORIQUE | 1 | |
| 4 | 90176-06014 | ECROU BORGNE | 2 | |
| 5 | 5VY-12485-10 | DURITE 5 | 1 | |
| 6 | 5VY-12579-00 | TUYAU 4 | 1 | |
| 7 | 90450-35001 | BRIDE, DE DURITE | 1 | |
| 8 | 90450-38040 | BRIDE, DE DURITE | 2 | |
| 9 | 5VY-1243F-01 | DURITE 3 | 1 | |
| 10 | 90467-11090 | JONC | 2 | |
| 11 | 2D1-12578-00 | TUYAU 3 | 1 | |
| 12 | 5GV-1246A-00 | COUVERCLE 1 | 1 | |
| 13 | 90110-06168 | BOULON, TETE HEXAGONALE CREUSE | 1 | |
| 14 | 93210-235A1 | JOINT TORIQUE | 1 | |
| 15 | 5VY-1243A-00 | DURITE 1 | 1 | |
| 16 | 2D1-1244G-00 | DURITE 4 | 1 | |
| 17 | 90467-11090 | JONC | 5 | |
| 18 | 90413-07023 | RAINURE 3 | 1 | |
| 19 | 2D1-1243E-01 | DURITE 2 | 1 | |
| 20 | 90464-13073 | BRIDE | 1 | |
| 21 | 2D1-12405-00 | ENS. VENTILATEUR | 1 | |
| 22 | 2D1-12405-10 | ENS. VENTILATEUR | 1 | |
| 23 | 1AA-12535-00 | PLAQUE | 2 | |
| 24 | 2D1-12675-00 | BOULON, FIXATION DE TURBINE | 6 | |
| 25 | 2D1-12461-00 | RADIATEUR COMPLET | 1 | |
| 26 | 22W-12462-00 | BOUCHON, RADIATEUR | 1 | |
| 27 | 90480-15363 | PASSE-FIL | 3 | |

Fig. 07 RADIATEUR & TUYAU



| N° | Référence de la | Description | | Remarques |
|----|-----------------|--------------------------------|---|-----------|
| 28 | 90387-07391 | COLLERETTE | 2 | |
| 29 | 90109-06015 | BOULON | 1 | |
| 30 | 90110-06232 | BOULON, TETE HEXAGONALE CREUSE | 1 | |
| 31 | 22C-12464-00 | SUPPORT, RADIATEUR | 1 | |
| 32 | 2D1-2139U-00 | AMORTISSEUR 2 | 1 | |
| 33 | 95802-06012 | BOULON XZ550-82 | 2 | |
| 34 | 90450-35001 | BRIDE, DE DURITE | 1 | |
| 35 | 2D1-12551-00 | DURITE 7 | 1 | |
| 36 | 90450-35001 | BRIDE, DE DURITE | 1 | |
| 37 | 90450-32001 | BRIDE, DE DURITE | 1 | |
| 38 | 2D1-12589-00 | TUYAU 6 | 1 | |
| 39 | 90450-22017 | BRIDE, DE DURITE | 1 | |
| 40 | 90464-23002 | BRIDE | 1 | |
| 41 | 90467-11090 | JONC | 1 | |
| 42 | 2D1-12467-00 | COUVERCLE, RADIATEUR | 1 | |
| 43 | 90111-06031 | BOULON | 2 | |
| 44 | 2D1-1240J-00-P0 | RADIATEUR COUVERCLE COMPLET1 | 1 | MBL2 |
| 45 | 2D1-1240K-00-P0 | RADIATEUR COVECLE COMPLET 2 | 1 | MBL2 |
| 46 | 90111-06078 | BOULON | 4 | |
| 47 | 90467-200A0 | JONC | 1 | |